



BLOOMFIELD PARK

M A B A L A C A T



AVAILABLE THRU
PAG-IBIG FINANCING

* Artist's Illustration of Townhouse A

Agyu me abe!



Artist's Illustration

TOWNHOUSE A LA: 38 SQ.M FA: 38 SQ.M



Artist's Illustration

TOWNHOUSE B LA: 38 SQ.M FA: 32 SQ.M



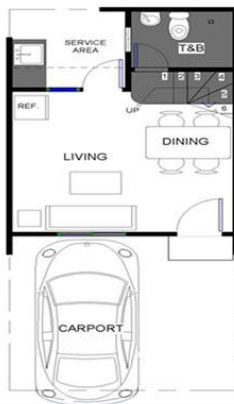
Artist's Illustration

TOWNHOUSE C LA: 58 SQ.M FA: 54 SQ.M

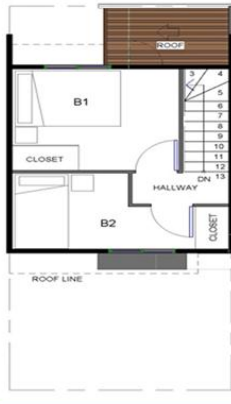


Artist's Illustration

SINGLE ATTACHED LA: 70 SQ.M FA: 36 SQ.M



GROUND FLOOR PLAN



SECOND FLOOR PLAN

TOWNHOUSE A - INNER UNIT (TYPICAL FLOOR PLAN)

LOT AREA : 38 SQ.M
FLOOR AREA : 38 SQ.M

BASIC HOUSE SPECIFICATIONS: LIVING, DINING, T & B, EXTERNAL KITCHEN AND PROVISION FOR 2 BEDROOMS

EXCLUDED: INTERIOR PAINTING, CEILING, FLOOR FINISHES & PARTITIONS

ACCESSIBLE & STRATEGIC LOCATION



- 90 meter walk on Road Right of Way to the project site
- 4.2 kms away from NLEX Angeles Exit and Marquee Mall
- One ride from Marquee Mall
- 24-hour availability of public utility vehicles

AMENITIES Clubhouse • Swimming Pool • Chapel • Basketball Court • Playground • Learning Center



Artist's Illustration



Artist's Illustration



Artist's Illustration



Artist's Illustration

HLURB LTS NOS: 26796 - 26797
 DEVELOPER: FIRST SHELTER VENTURES & REALTY CORP.
 PROJECT LOCATION: ANGELES-MAGALANG ROAD, BRGY. BICAL, MABALACAT CITY, PAMPANGA
 PROJECT COMPLETION: DECEMBER 30, 2019
 MAXIMUM SELLING PRICE: Php 1.7 M